

# Emergency Response Management

## Emergent Information System (EIS) Lab

Enrique Tognalli

Dr. Mihaela Ulieru



UNIVERSITY OF  
CALGARY

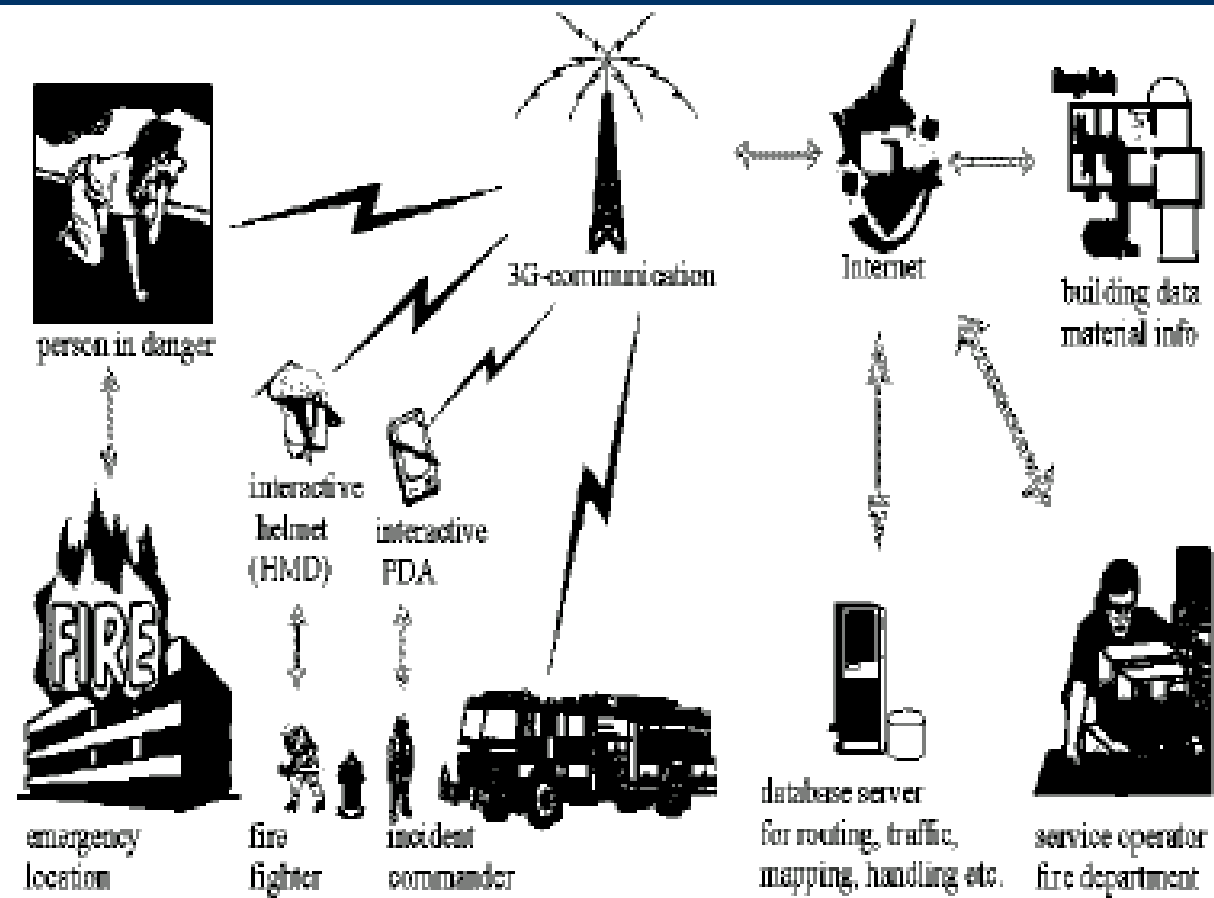
# Outline

- Proposal
- Scenario
- Holarchy Model
- Project Overview
- Future Work & Challenges

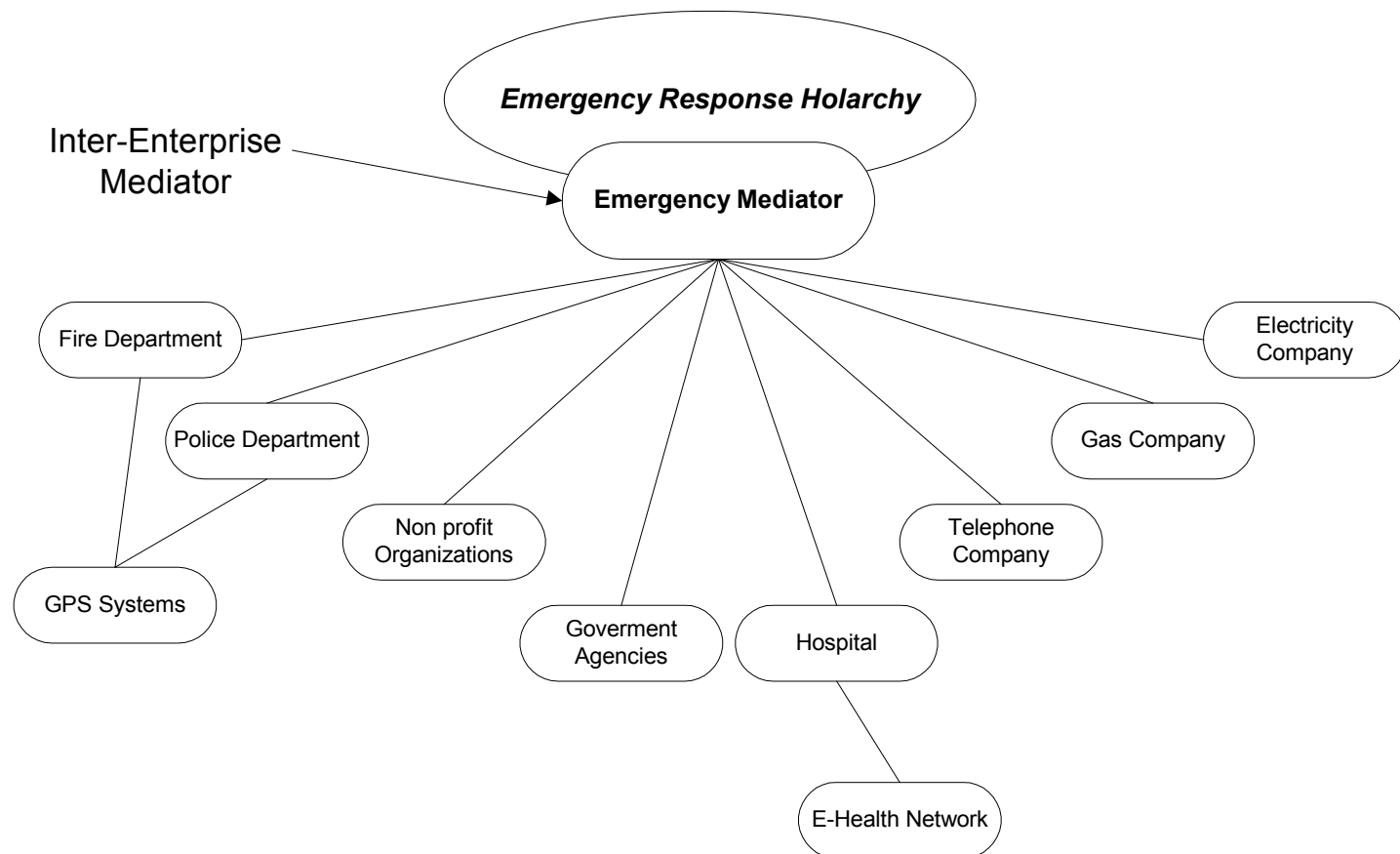
# Proposal

- Create an information infrastructure capable of exchanging information based on a Multi Agent System that adapts to different situations.
- Manage the logistic of a disaster situation
- Characteristics
  - FIPA compliant
  - Wireless
  - Reliable
    - correct information
    - online time

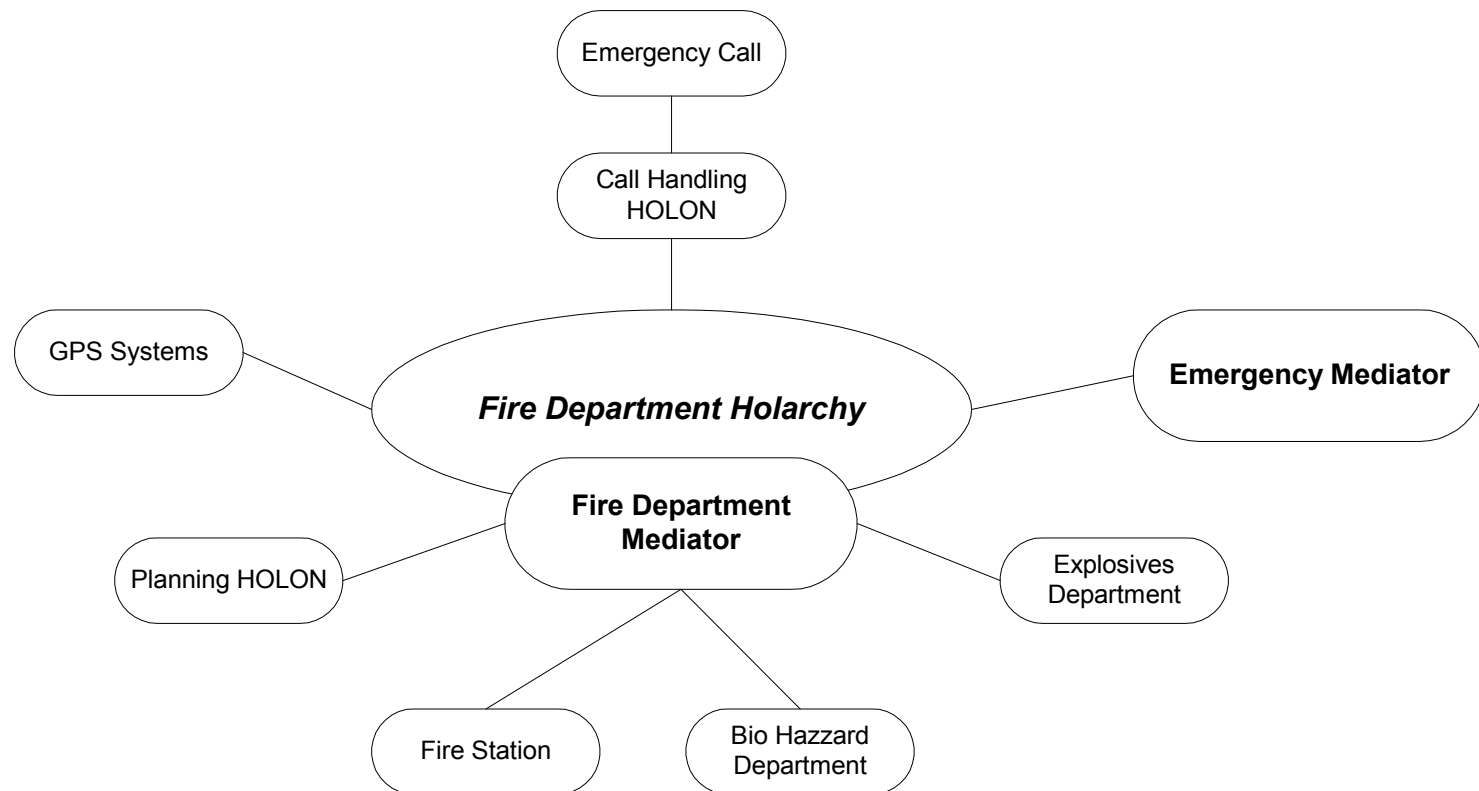
# Scenario



# Proposal – Holarchy Model



# Proposal – Holon



# Project Overview

- JADE – LEAP Platform
- MIDP Cell phones & PDAs
  - Nokia – PalmOS – PocketPC (KADA KVM)
- J2ME
- 3 Stages
  - ***Provide Wireless Network (Integration)***
  - Develop and Implement Search Algorithm for Traffic Planning
  - Expand the system to all the areas and Ad Hoc Networks

# Future Work & Challenges

- Develop the system's Ontology
- Detect and work around network's problems (bottlenecks, bandwidth, etc.)
- Implement the UoC Node and tests
- Implement the test system
- Measure Reliability of the system
- Next Stage



# Thank You!!!

